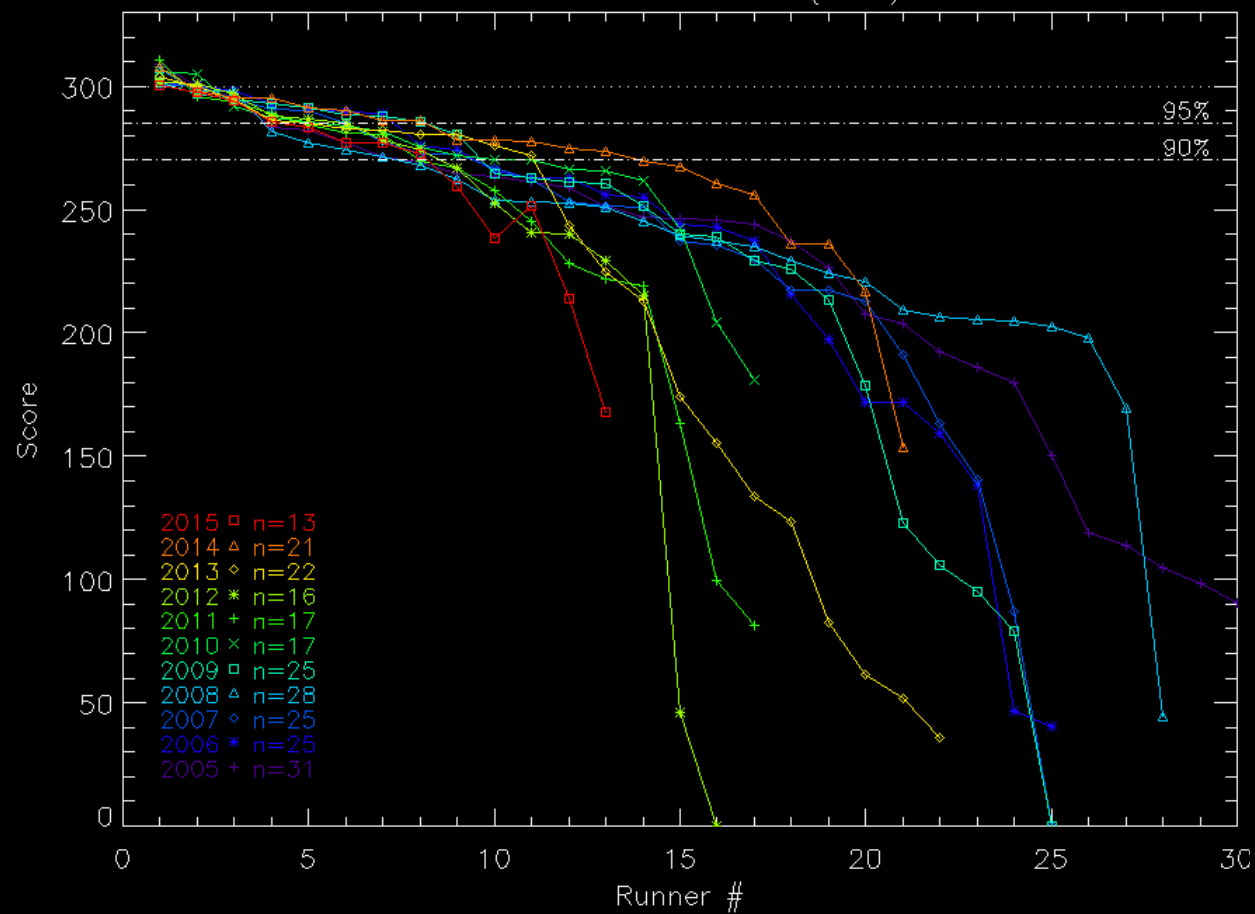
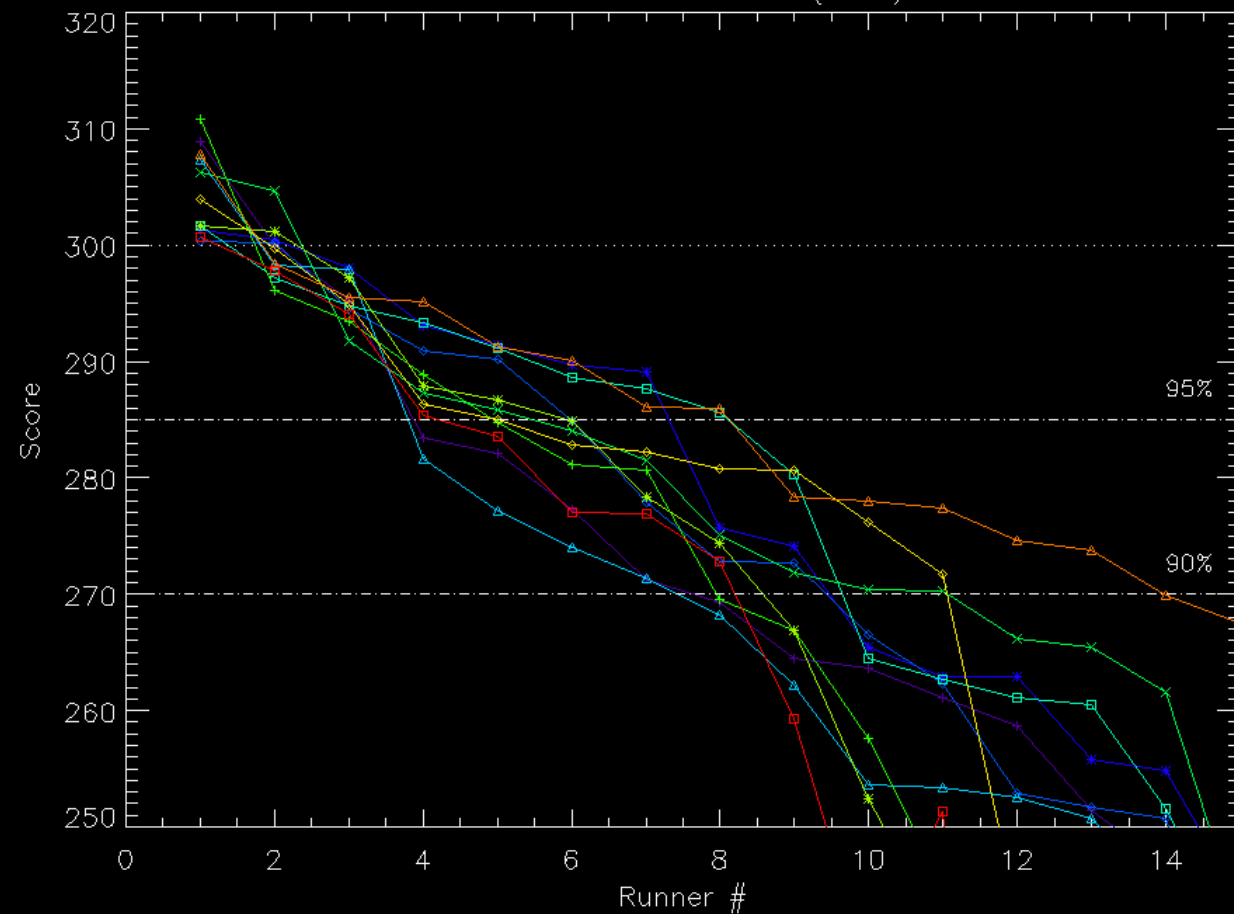


Team Trials Scores (Men)

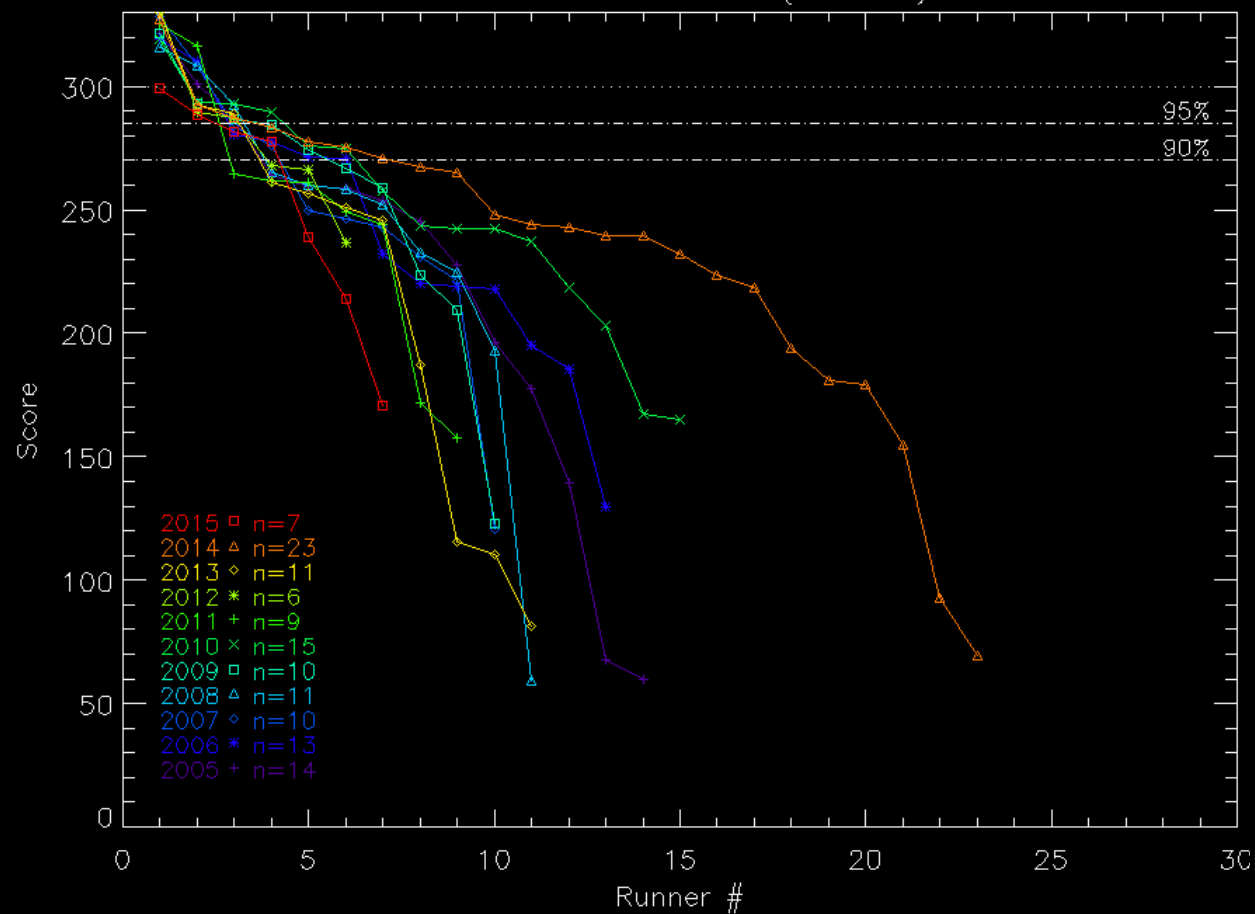


(Zoomed)

Team Trials Scores (Men)

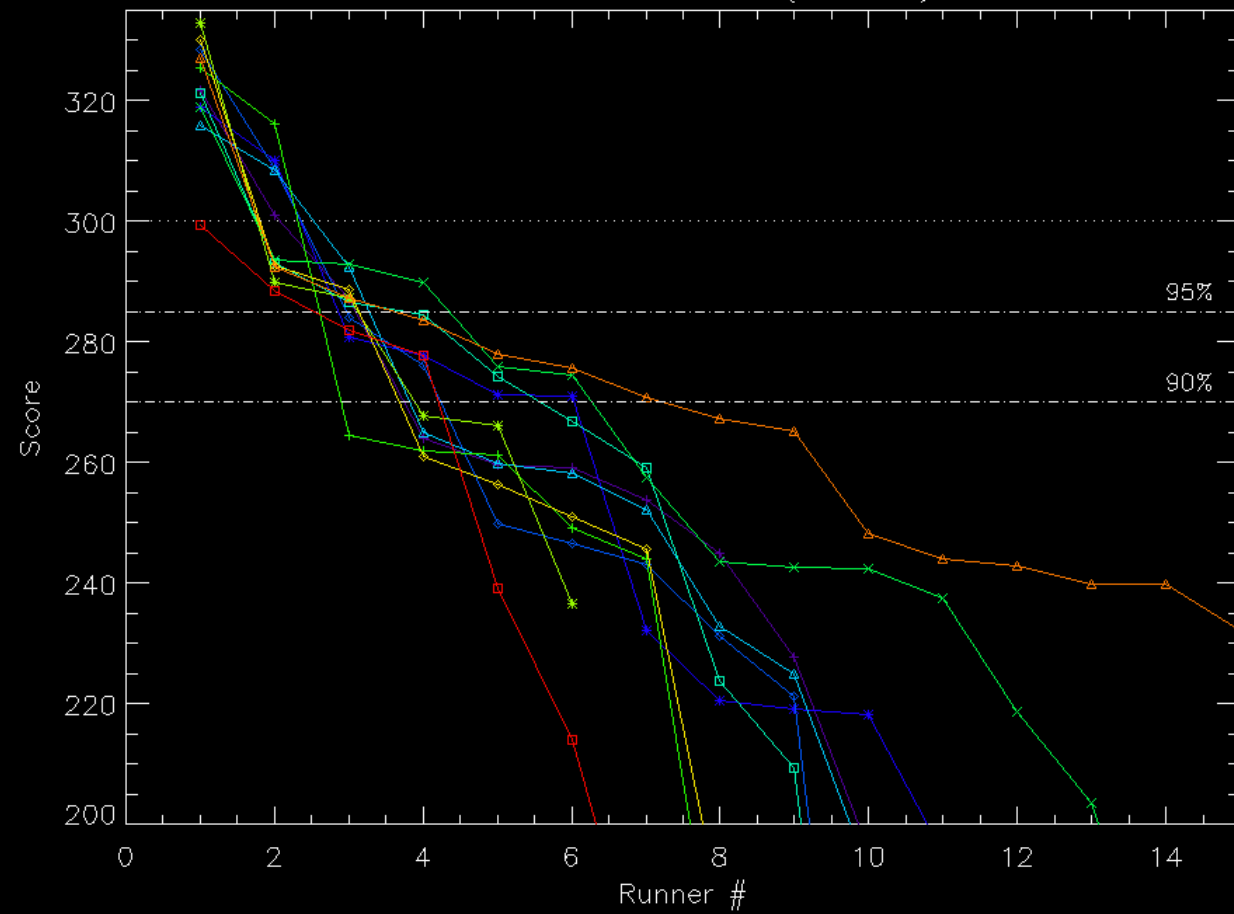


Team Trials Scores (Women)

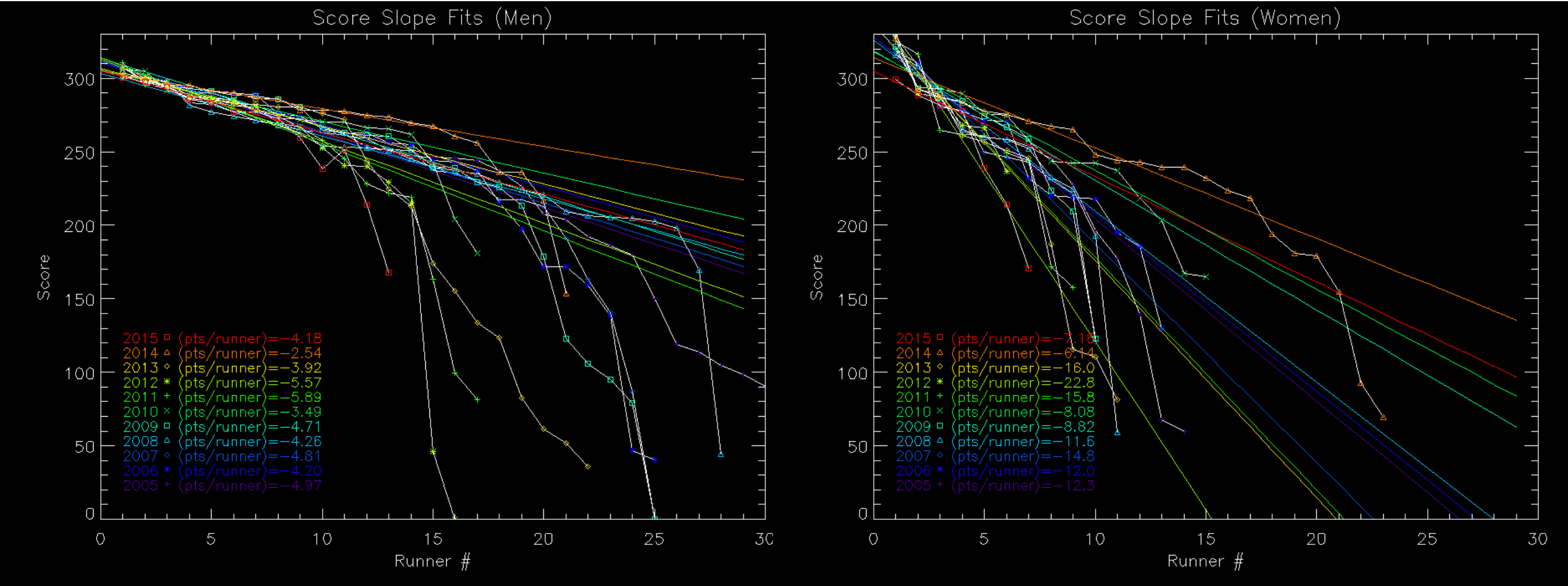
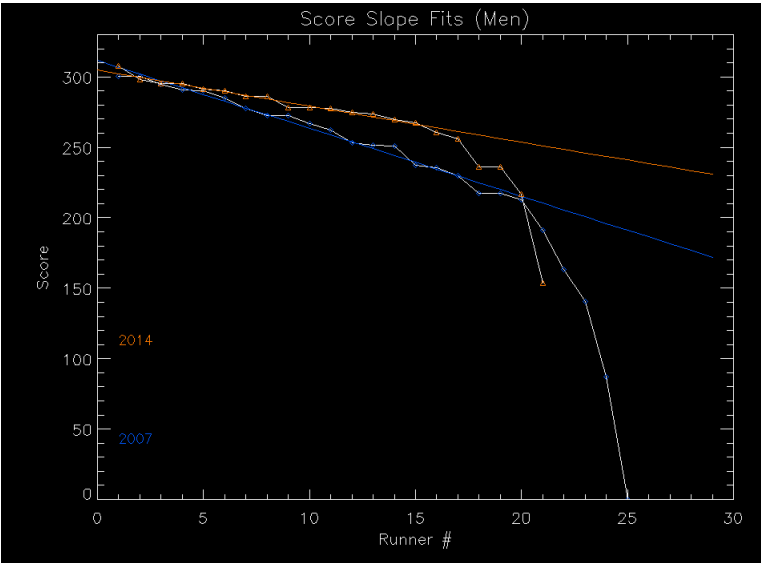


(Zoomed)

Team Trials Scores (Women)



Each year has a (remarkably linear) characteristic slope before a steep turn-down. Example at right showing 2007 and 2014. All years overplotted below.



Men's results are consistently within a few percent of the slope out to 11 places. Women's results are noisier, but still consistent out to 7 places. 2015 is an exception – there was a relatively small turnout, and the lowest scores (last point for men, last two for women) included one MSP or DNS because there were no dropped scores allowed that year. Otherwise the 2015 line would likely have been consistent with the other years out to the marked fiducials.

